

# PRODUCT DATASHEET

## PRODUCT DESCRIPTION:

### PURERENA LED Slim Compact Exit Sign EX9:

30m visibility.

Multiple mounting solutions.

AT/ MT/ DALI test available.

LiFePO4 battery with long life time.

High quality acrylic panel, replaceable PET pictogram.



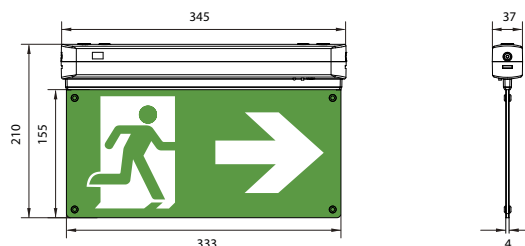
## PICTURES:



## LED SLIM COMPACT EXIT SIGN - ET3 FIXED | EX9 PROFILE



## DIMENSIONS:



## GENERAL SPECIFICATIONS:

<b>Voltage</b>	220-240VAC, 50/60Hz
<b>Mains Power</b>	3W Max
<b>Emergency Power</b>	1W Max
<b>Battery</b>	Li-ion 3.2V 1500mAh
<b>Charge Time</b>	>24H
<b>Discharge Duration</b>	>3H
<b>CCT/ CRI</b>	6000K / Ra>80
<b>Visibility</b>	30M
<b>Test Mode</b>	AT / MT / DALI
<b>Protection Class</b>	Class II
<b>IP Rating</b>	IP20
<b>Warranty</b>	2 Years

## PRODUCT DATASHEET

## LED SLIM COMPACT EXIT SIGN - ET3 FIXED | EX9 PROFILE

### STRUCTURE:

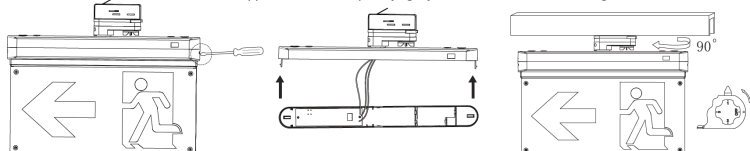
Material	PC
LGP	Acrylic (PMMA)
Pictogram	PVC
Operating Temp (°C)	0 °C ~ 45 °C
Mounting Type	Ceiling/ Recessed/ Side/ Back/ Inclined/ Track/ Pendant Mount
Pictogram Directions	EXIT / UP/ DOWN/ LEFT & RIGHT
Application	Suitable for commercial use.

### INSTALLATION:



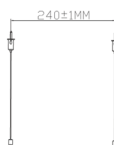
#### Track mounting

1. Use a flat screwdriver to open the bottom cover.
2. The internal wiring of the lamp body refers to step 3 of ceiling installation. Close the upper cover and lamp body tightly
3. Snap the luminaire onto the mounting bracket. Fix the track adaptor onto track, turn clockwise or anti-clockwise until the light is on.

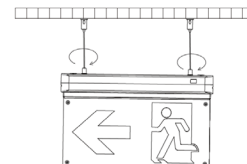


#### Pendant mount

1. First, fix the lifting bracket to the ceiling with self tapping screws at a spacing of 240mm.

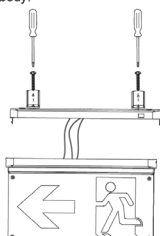


2. Refer to step 3 of ceiling installation for internal wiring of the lamp body. Lock the lamp body and lifting components and adjust the length of the lifting rope to the appropriate position



#### Back mount

1. First, fix the back mounting bracket onto the lamp body.



2. Fix the back mounting bracket on the wall and complete the installation.

